

WE HAVE A NEW SET OF WHEELS FOR YOU!

**WILSON WHEEL[®]
TECHNOLOGY**



Like the wheel, turret tooling has undergone continuous improvement in the pursuit of greater speed and performance. Never one to follow the crowd, Wilson Tool International[®] leads the way with innovative developments that not only redesign existing technology, but redefine it as well.

Introducing the expanded family of Wilson Wheel[®] tools. Together the Rolling Shear[™], Rolling Rib[™], Rolling Offset[™] and Rolling Pincher[™] tools make up one of the most revolutionary lines of tooling in the metal fabricating industry. If you are not currently using the Wilson Wheel[®] family of tools, you will be amazed at the time and money you can save. And in a world where time is money, the benefits are obvious.

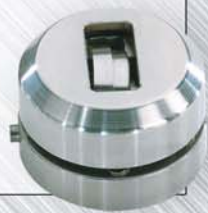
The Wilson Wheel[®] family of tooling — one more way Wilson Tool International strives to make its customers “the most successful fabricators in the world.”

Sample:

Rolling Shear[™]

Benefits/Specifications:

- High speed—equal to programmed table travel speed
- Create slits in any contour using Auto Index
- Virtually no burrs or nibble marks; and no scrap
- Slit can be started or ended anywhere on the sheet
- Works on a wide range of material:
 - 0.8 - 1.5mm stainless steel
 - 0.8 - 2.0mm mild steel
 - 0.8 - 2.5mm aluminium
- Min. radius 45-100mm, depending on machine type



Sample:

Rolling Rib[™]

Benefits/Specifications:

- High speed—equal to programmed table travel speed
- Create ribs in any contour using Auto Index
- Rib can be started or ended anywhere on the sheet
- Works on a wide range of material:
 - 0.8 - 2.5mm on most material types
- Stock sizes 2.5mm and 3.0mm radii
- Min. radius 16mm on material up to 1.5mm and 20mm on material greater than 1.5mm, depending on machine type



Sample:

Rolling Offset[™]

Benefits/Specifications:

- High speed—equal to programmed table travel speed
- Create offsets in any contour using Auto Index
- Virtually no nibble marks
- Offsets can be started or ended anywhere on the sheet
- Works on a wide range of material:
 - 0.8 - 1.5mm stainless steel
 - 0.8 - 2.0mm mild steel
 - 0.8 - 2.5mm aluminium
- Stock sizes 1.5mm and 3.0mm
- Min. radius 25mm, depending on machine type



Sample:

Rolling Pincher[™]

Benefits/Specifications:

- High speed—equal to programmed table travel speed
- Create slits at any angle using Auto Index
- Virtually no burrs or nibble marks
- Slit can be started or ended anywhere on the sheet
- No scrap
- Works on a wide range of material:
 - 0.8 - 1.5mm stainless steel
 - 0.8 - 2.0mm mild steel
 - 0.8 - 2.5mm aluminium
- Min. radius 500mm



Wilson Tool International Ltd. Stirling Road, South Marston Industrial Estate, Swindon, Wiltshire SN3 4TQ

Free phone: 0800 373748 Tel: +44 (0) 1793 831818 Tel free: 1-800 70 90 09 Ireland

Free fax: 0800 373758 Fax: +44 (0) 1793 831945 Fax free: 1-800 53 55 38 Ireland

Denmark - 80 20 20 24 Denmark office - +45 44 53 16 99 Sweden - 020 79 14 19 Norway - 80 01 08 09 Finland - 0800 114 523

www.wilsontool.com sales@wilsontool.eu.com